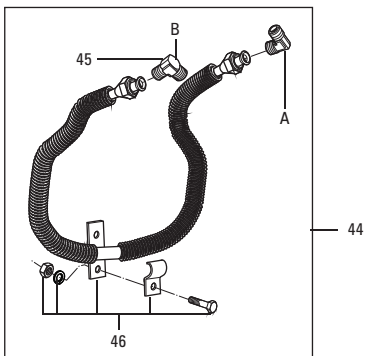
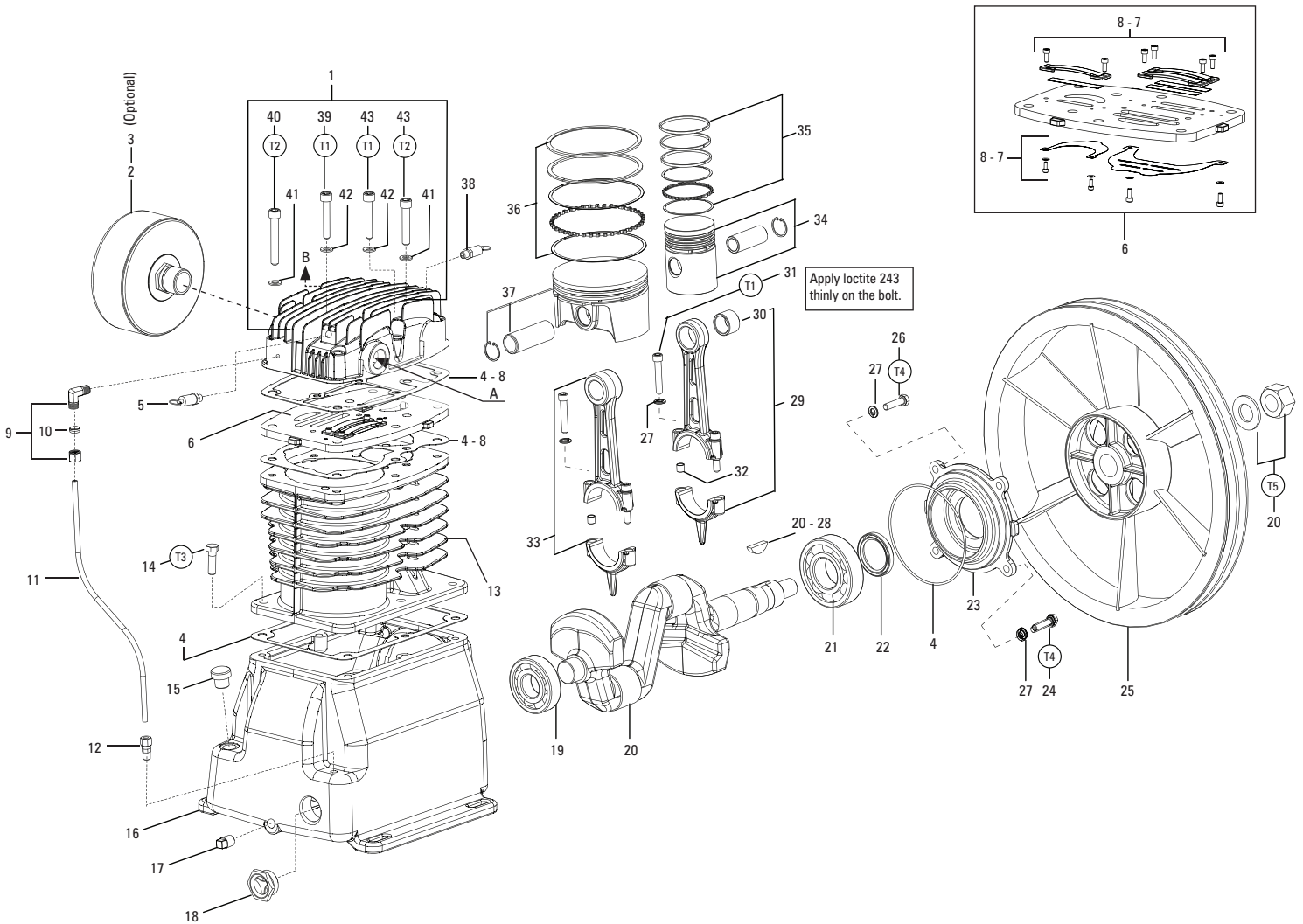


CAST IRON INDUSTRIAL COMPRESSORS

COMPRESSOR MSL 30 MAX - TWO STAGE - 175 PSI

TECHNICAL DATA

MODEL	DISPLACEMENT cfm	MAX. PRESSURE psi	RPM	MOTOR hp (running)	BELT	MOTOR PULLEY 2 POLES		OIL CAP.		WEIGHT in lbs	DISCHARGE
						inch	mm	in ℓ	in qt		
MSL 30 MAX	30	175	820	7.5	2-A	4.0	103	1.5	1.58	144	3/4" NPT



POSITION	lbf.in	lbf.ft	N.m
T1 43 - 31	221.3	18.3	25.0
T2 39 - 40	486	39.8	55.0
T3 14	256	21.0	29
T4 24 - 26	132	10.8	15
T5 20	1,124.0	92.2	127.0

WARNING

The two parts of connecting rod (N° 29 and 33) are unique pair of assembly. The connecting rod won't work well if its pairs is not assembled and if the right torque (221.3 lbf.in and 18.3 lbf.ft) is not applied in the bolt N° 31.

TABLE 1 - Torque Especification

BARE PUMP PARTS

N°	CODE	DENOMINATION	QTY.
1	709.1338-0/AT	Cylinder cover	01
2	830.1263-0	1" NPT Air filter	01
3	830.1257-0	Filter element	01
4	830.1897-0	Gasket (kit)	01
5	022.0177-0/AT	LP 1/8" ASME safety valve	01
6	809.1787-0/AT	Valve plate	01
7	830.1898-0	Valve plate repair	01
8	830.1995-0	Gasket/valve plate repair	01
9	003.0005-5/AT	NPT 1/8" x 1/4" elbow	01
10	830.0599-8	1/4" ring (kit)	01
11	709.1585-0/AT	Crankcase breather tube	01
12	003.0054-3/AT	NPT 1/8" x 1/4" straight connection	01
13	709.1708-0/AT	Cylinder D=120mm d=2.1/2"	01
14	*	3/8" x 1" Hex. head bolt	06
15	028.0297-0/AT	M18 plug	01
16	709.1574-0/AT	Crankcase with breather for cover	01
17	003.0028-4/AT	1/4" plug	01
18	830.0154-2	1" oil level sight	01
19	019.0007-2/AT	6306 bearing	01
20	830.1092-0	Crankshaft (kit)	01
21	019.0074-0/AT	6308 bearing	01
22	60082501/AT	Oil seal	01
23	709.1577-0/AT	Flange	01

N°	CODE	DENOMINATION	QTY.
24	*	5/16" x 1" Hex. head bolt **	01
25	709.1405-0/AT	Flywheel	01
26	*	5/16" x 1.1/4" Hex. head bolt	03
27	*	5/16" lock washer	08
28	709.0147-1/AT	key	01
29	830.1093-0	HP connecting rod with bushing needle (kit)	01
30	019.0028-0/AT	Bushing needle	01
31	*	5/16" x 1.3/4" Allen hex. head bolt	04
32	809.1082-C/AT	Guide bushing connecting rod (kit with 4 pcs)	04
33	809.1083-0/AT	LP connecting rod (kit)	01
34	830.1079-0	HP Ø 2. 1/2" piston (kit)	01
35	830.1078-0	HP 2. 1/2" ring (kit)	01
36	830.1091-0	LP 120mm ring (kit)	01
37	016.0121-0/AT	LP Ø 120mm piston	01
38	022.0215-0/AT	HP 1/8" ASME safety valve	01
39	*	3/8" x 2.1/2" Allen hex. head bolt (see note 2)	04
40	*	3/8" x 1.1/2" allen hex head bolt	04
41	*	3/8" lock washer	06
42	830.1083-0	Washer copper (kit with 10 pcs)	02
43	*	5/16" x 1.3/4" Allen hex. head bolt	02
44	709.1590-0/AT	Intercooler whit nut (kit)	01
45	003.0772-0/AT	NPT 3/4" x 3/4" elbow	02
46	830.1084-0/AT	Intercooler holder (kit)	01

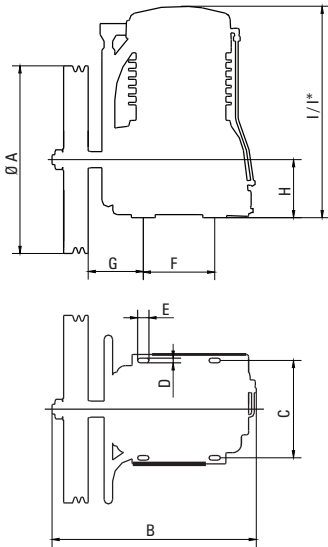
* Part available in the market - not sold by Schulz S.A. ** Assembled of the intercooler holder (item 46)

Note:

1 - HP=High Pressure ; LP= Low Pressure.

2 - Not assemble lock washer in the position n° 39 for bolt internal.

DIMENSIONS



MSL 30 MAX

	mm	inch
A	420.0	16.53
B	451.0	17.7
C	255.0	10.0
D	10.5	0.41
E	25.5	1.0
F	191.0	7.6
G	118.0	4.6
H	130.0	5.1
I	480.0	18.9
I*	500.0	19.7

* With air filter item 2

INSTALLATION AND OPERATION INSTRUCTIONS

INSTALLATION AND LOCATION

1. Installation:

Install the compressor in a covered, well ventilated area, free of dust, toxic gases, humidity or any other kind of pollution. The compressor should be located no closer than 32" (800mm) from a wall or any other obstacle that could interfere with the air flow through the fan. This distance will also make maintenance easier. Place the compressor on a leveled surface. Rotation of the flywheel must be in the direction of the arrow cast into the flywheel. The maximum ambient temperature recommended while working is 104°F or 40°C. If necessary, install an exhaust fan to guarantee fresh air and to dissipate heat.

Before making the electrical connections, check oil level and top-up lubricating oil. For type of oil, see table at the end of these instructions.

2. Electrical connection: The country's valid electrical standards must be followed regarding Low Voltage Electrical Installation.

OPERATION

1. Initial start procedure:

Before turning on the compressor, check the crankcase oil level. It must be in the middle of the oil level sight or oil level dipstick. As to the type of oil to be used and the recommended change intervals, check at "Lubrication" and as to its volume, check the Technical Data Table.

2. Start:

Turn on the electrical start key and let your compressor run for about 10 (ten) minutes, what will keep the tank's internal pressure or compressed air around 20 psi. This will optimize a homogeneous lubrication of the parts.

LIMITED WARRANTY

All component parts on your SCHULZ compressor are warranted to be free of defects in workmanship and material for a period of one year. Transportation charges are responsibility of the purchaser. This warranty extends to the original purchaser of the compressor only.

There are no express warranties except as contained in this limited warranty statement and implied warranties, including those of merchantability and fitness for a particular purpose, are limited to the period of warranty.

Our liability is limited solely to replacement of nonconforming parts as set forth herein and does not include any liability for any incidental, consequential, or other damages of any kind. This warranty gives you specific legal rights, and you may also have other rights that vary from state to state.

DISTRIBUTOR

MAINTENANCE WARNING

Turn off power before servicing and be sure the air tank is unloaded. These instructions are based on normal operating conditions. If the compressor is located in an exceedingly dusty area, increase the frequency of all inspections.

DAILY

- Inspect the compressor visually.
- Check oil level and add some if necessary, before turning the compressor on.
- Drain moisture from the piping system.
- Be sure there is no excessive or unusual vibration or noise.

WEEKLY

- Remove and clean intake air filters; do not wash the filter element.
- Check V-belts for tightness. Belt tension should be adjusted to allow approximately 3/8" to 1/2" (9 to 13 mm) deflection with normal thumb pressure or weight of the 3,7kg (8.15lb).
- Clean cylinders externally, cylinder head, motor, fan blade, tubing, and tank.
- Safety valve should be tested manually to see if it is working properly.

MONTHLY

- Check entire system for air leakage around fittings, etc by using water and soap lather.
- Check the pressure switch operation.
- Check for oil contamination and change it if necessary.

QUARTERLY

- Change the air filter element every 300 working hours or quarterly. (Whichever occurs first).

- Fasten bolts and nuts as required. (See Table 1)

- Change oil more frequently if compressor is located in a very dirty environment.

-WHILE RUNNING IN A PERIOD OF ABOUT 100 WORKING HOURS THE OIL LEVEL SHOULD BE CARE FULLY CHECKED.

ANNUALLY

- Test and calibrate the pressure switch, pressure gauge and safety valve according to their own technical standards. These parts must be removed from the tank and pump to be tested.

- Inspect and clean the suction and discharge valve(s) plate(s) every 1000 (one thousand) working hours (whichever occurs first), located between the cylinder and its cover and, if necessary, replace it (them) according to the operation conditions.

- The first oil change should be made after 8 hours of operation.

- The second oil change after 40 hours of operation.

- The third and following exchanges should be made after 200 hours of operation, or 60 (sixty) days, whichever occurs first.

Note:

Heavy Duty and multi-viscous oils are not adequate for Schulz air compressor's lubrication. The same applies to oils that tend to emulsify.

We recommend good industrial oil for air compressors, with rust and oxidation inhibitors and high viscosity level (from 90 to 95), SAE or ISO, as indicated in the table below:

RECOMMENDED LUBRICANT OILS FOR SCHULZ AIR PUMPS

AMBIENT TEMPERATURE F (C)		
Below 32 °F Below 0 °C	32 °F to 68 °F 0 °C to 20 °C	68 °F to 104 °F 20 °C to 40 °C
SAE 10W or ISO 32	SAE 20W or ISO 68	SAE 30 or ISO 100

NOTE: Schulz reserves the right to make changes without prior notice.

SCHULZ

INFORMACIÓN TÉCNICA
TECHNICAL INFORMATION

export@schulz.com.br
+55 47 3451 6252

PIEZAS ORIGINALES
Consulte Distribuidor Autorizado

ORIGINAL
REPLACEMENT PARTS
Contact Authorized Distributor



SCHULZ OF AMERICA, INC.
3420, Novis Pointe
Acworth, GA 30101
Phone # (770) 529.4731
Fax # (770) 529.4733
sales@schulzamerica.com
www.schulzamerica.com

025.0421-0 rev.3 07/11

RECYCLABLE

