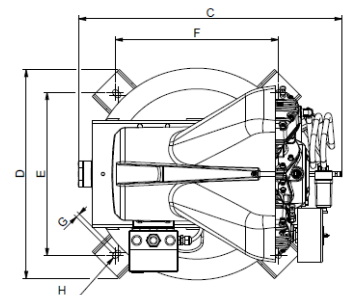
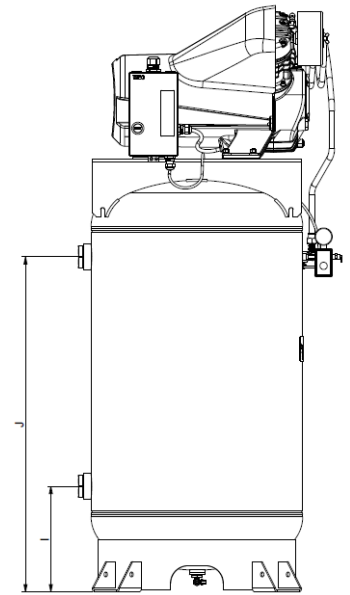
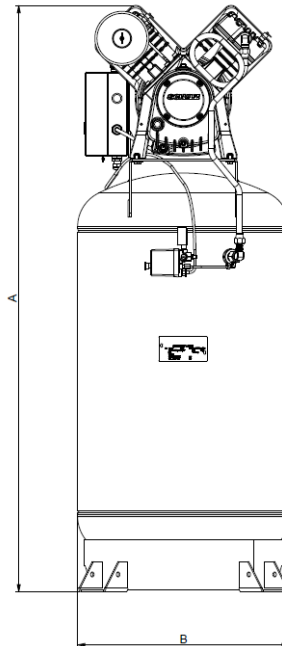
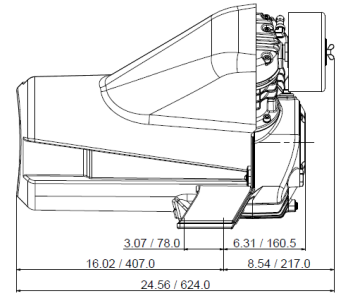
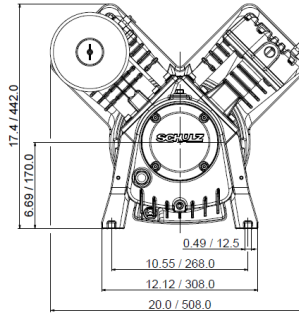
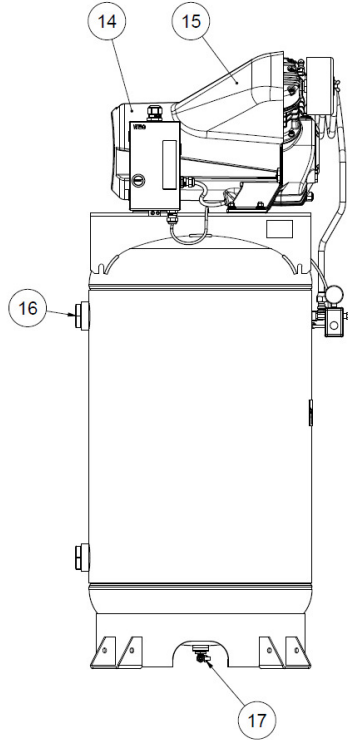
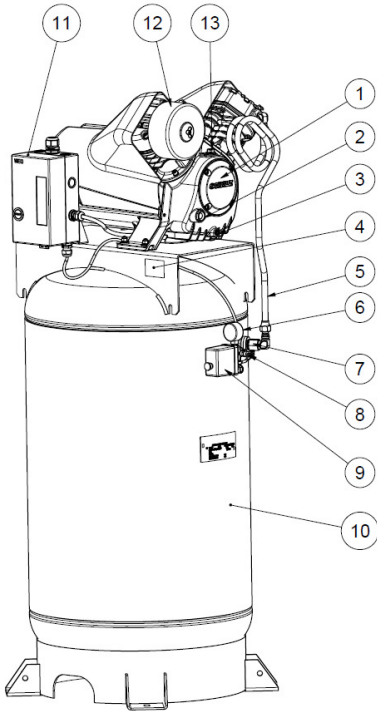


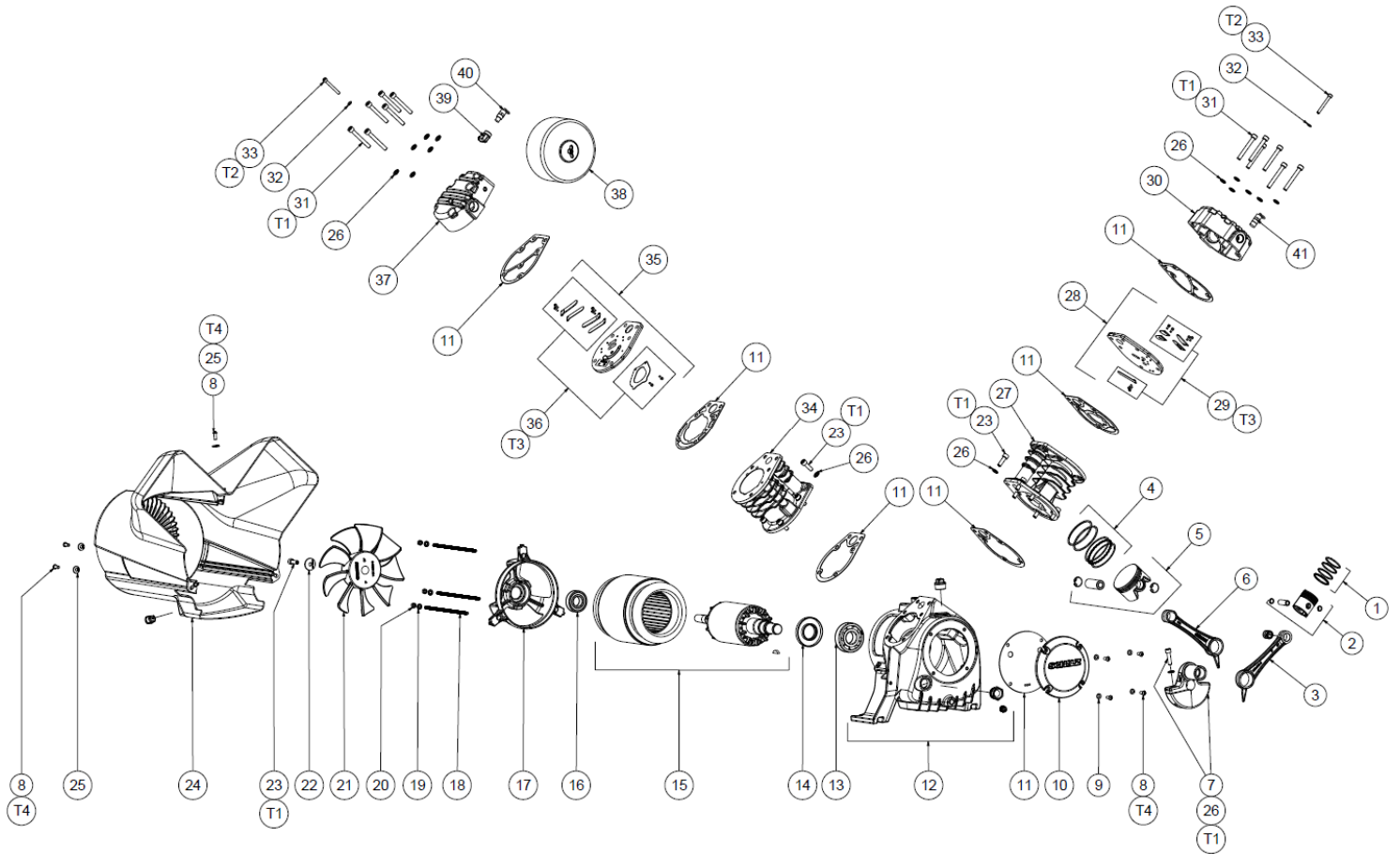
TECHNICAL DATA MCSV-20 HEAVY DUTY

Model	Displacement		Maximum Pressure		Air Receiver tank	Rpm	Electric motor					Dimensions (inch / mm)								Air discharge connection	Lubricant (ml)	Weight (Kg)	Painting		
	cfm	l/min.	psig	bar	Geometric Volume (liter / gal)		hp	KW	Hz	Polos	Voltage (V)	A	B	C	D	E	F	G	H					I	J
MCSV-20 AP Three-phase	20	566,4	175	12	300 / 80	1710	5	3,7	60	4	230	66.38 / 1686	23.97 / 609	29.88 / 759	23.7 / 602	18.5 / 470	18.5 / 470	0.47 / 12	0.63 / 16	11.96 / 304	37.95 / 964	3/4"	1200	165	Black (Pump)
MCSV-20 AP Single-phase						1750																		175	Gray (Tank)



Nº	CODE	DENOMINATION	QTY.
1	932.7559-0	Bare pump CMSV-20 AP 230V (Three-phase)	1
1.1	932.7558-0	Bare pump CMSV-20 AP 230V (Single-phase)	1
2	830.0775-0/AT	3/4" oil level sight	1
3	003.0028-4/AT	1/4 plug	1
4	-	Air compressor Identification	1
5	709.2129-0/AT	Discharge pipe	1
6	011.0114-0	Pressure gauge	1
7	60281012	Check valve	1
8	022.0162-0	1/4" ASME safety valve	1
9	012.1606-0/AT	Pressure switch	1
10	25004146U/CZPO	80 gal vertical tank	1
11	012.1560-0/AT	Three-Phase Electric starter	1
11.1	012.2278-0/AT	Single-Phase Electric starter	1
12	007.0116-0	Air filter (3/4 NPT Coupling thread)	1
12.1	007.0118-0	Air filter element	
13	003.0031-4/AT	3/4 plug	1
14	015.1168-0/AT	Three-Phase Electric motor 230V 60Hz	1
14.1	015.1194-0/AT	Single-Phase Electric motor 230V 60Hz	1
15	028.0776-0/AT	Three-Phase Protection cover	1
15.1	028.0942-0/AT	Single-Phase Protection cover	1
16	809.1926-0	1/4" tank drain valve	1
17	709.1248-0	Hose for tank drain	1

BARE PUMP PARTS



SCREW LIST - Applying torque values

Number	TORK		DENOMINATION
	N.m	lbf.in	
23	T1	33	M8-1,25 x 25 mm
31	T1		M8-1,25 x 65 mm
7	T1		M8-1,25 x 30 mm
33	T2	12	M6-1 x 50 mm
29 / 36	T3	2,2	M3-0,5 x 8 mm
8	T4	12	M6-1 x 16 mm

Nº	CODE	DENOMINATION	QTY.
1	830.1268-0	Piston Ring Set (High Pressure)	1
2	701.0416-0/AT	Piston (High Pressure)	1
3	830.1269-0	Connecting rod (High Pressure) Needle bearing	1 1
4	830.1229-0/AT	Piston Ring Set (Low Pressure)	1
5	016.0123-0/AT	Piston (Low Pressure)	1
6	709.2053-0/AT	Connecting rod (Low Pressure)	1
7	709.2065-0/AT	Crankshaft	1
		Socket Head Cap Screws M8-1,25 x 30mm, Class 12.9	1
		Lock washer Nd = 8 mm	1
8	*	Button Head Screw M6-1 x 16 mm, Class 12.9	7
9	*	Flat washer Nominal diameter = 6,5 mm x External diameter = 12 mm	4
10	830.2662-0	Front cover assembly	1
11	830.2621-0	Sealing assembly	1
12	830.2622-0	Crankcase	1
		Bushing	1
		Pressure Plug 1/4" BSP	1
		Pressure Plug 3/4" BSP	1
13	019.0111-0/AT	Bearing	1
14	023.0500-0/AT	Oil seal	1
15	015.1168-0/AT	Three-Phase Electric motor 230V 60Hz	1
15.1	015.1194-0/AT	Single-Phase Electric motor 230V 60Hz	1
16	019.0117-0/AT	Bearing	1
17	709.2064-0/AT	Electric motor cover	1
18	*	M6-1 x 200 mm screw rod. (three phase) / M6-1 x 220 mm screw rod. (Single phase)	3
		Lock washer Nd = 6 mm	3

Nº	CODE	DENOMINATION	QTY.
20	*	Hex nut M6-1	3
21	709.2066-0/AT	Propeller	1
22	*	Flat washer Nominal diameter = 8 mm x External diameter = 29 mm	1
23	*	Socket Head Cap Screws M8-1,25 x 25mm, Class 12.9	13
24	028.0776-0/AT	Protection cover (Three-Phase) Cable gland	1 1
24.1	028.0942-0/AT	Protection cover (Single-Phase)	1
		Electrical conduit	1
25	*	Flat washer Nominal diameter = 7 mm x External diameter = 17 mm	3
26	*	Lock washer Nd = 8 mm	25
27	709.2058-0/AT	Cylinder (High Pressure)	1
28	830.2669-0	Valve plate assembly (High Pressure)	1
29	830.2624-0	Valve plate repair (High Pressure)	1
30	709.2126-0/AT	Cylinder cover (High Pressure)	1
31	*	Hex head bolt M8-1,25 x 65 mm, Class 12.9	12
32	*	Copper flat washer, Nd = 6,5 mm x Ed = 11 mm	2
33	*	Socket Head Cap Screws M6-1 x 50mm, Class 12.9	2
34	709.2125-0/AT	Cylinder (Low Pressure)	1
35	830.2663-0	Valve plate (Low Pressure)	1
36	830.2626-0	Valve plate repair (Low Pressure)	1
37	709.2128-0/AT	Cylinder cover (Low Pressure)	1
38	007.0116-0	Air filter (3/4" NPT Coupling thread)	1
38.1	007-0118-0	Air filter element	1
39	*	Elbow 1/8" NPT (Male-female)	1
40	022.0177-0	HP 1/8" ASME safety valve	1
41	022.0162-0	HP 1/8" ASME safety valve	1

*Part available in the market (not sold by Schulz S.A.).