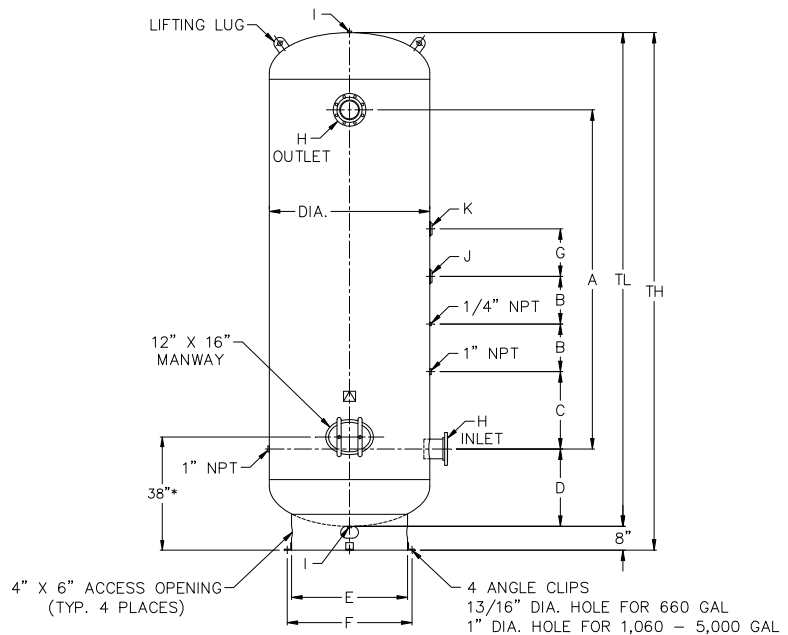


# Large Vertical Industrial Air Receivers 660 - 5000 Gallons



**Description:** Large Vertical Industrial Air Receiver

**Specifications:** Built to ASME Code Section VIII  
 National Board Registered  
 Carbon Steel  
 Basing Support  
 Grey Primer  
 Other Design Pressures Available  
 \*Manway Access height may vary

PART #	PRES (PSI)	DESCRIPTION					DIMENSIONS (INCHES)							OPENINGS				WT (LBS)
		GAL	DIA	TL	TH	A	B	C	D	E	F	G	H	I	J	K		
A21642117165	165	660	42	117	125	77	16	26	20	33	36	X	4 FLG	1 NPT	3 NPT	X	1397	
A21648144165	165	1060	48	144	152	96	16	26	24	39	42 1/2	X	6 FLG	1 NPT	3 NPT	X	2110	
A21654166165	165	1550	54	166	174	114	16	26	26	39	42 1/2	X	6 FLG	1 1/4 NPT	3 NPT	X	2950	
A21660190165	165	2200	60	190	198	140	16	26	26	45	48 1/2	X	6 FLG	1 1/4 NPT	3 NPT	X	3740	
A21660220165	165	2560	60	220	228	168	16	26	26	45	48 1/2	X	6 FLG	1 1/4 NPT	3 NPT	X	4243	
A21666214150	150	3000	66	214	222	158	16	26	28	49	52 1/2	X	6 FLG	1 1/4 NPT	3 NPT	X	6492	
A21672228150	150	3800	72	228	236	168	16	26	30	55	58 1/2	X	6 FLG	1 1/4 NPT	3 NPT	X	6996	
A21672305150	150	5000	72	305	313	245	16	26	30	55	58 1/2	22	6 FLG	1 1/4 NPT	3 NPT	3 NPT	8500	
A21684229150	150	5000	84	229	237	168	16	26	30 1/2	67	70 1/2	24	6 FLG	1 1/4 NPT	3 NPT	3 NPT	7642	