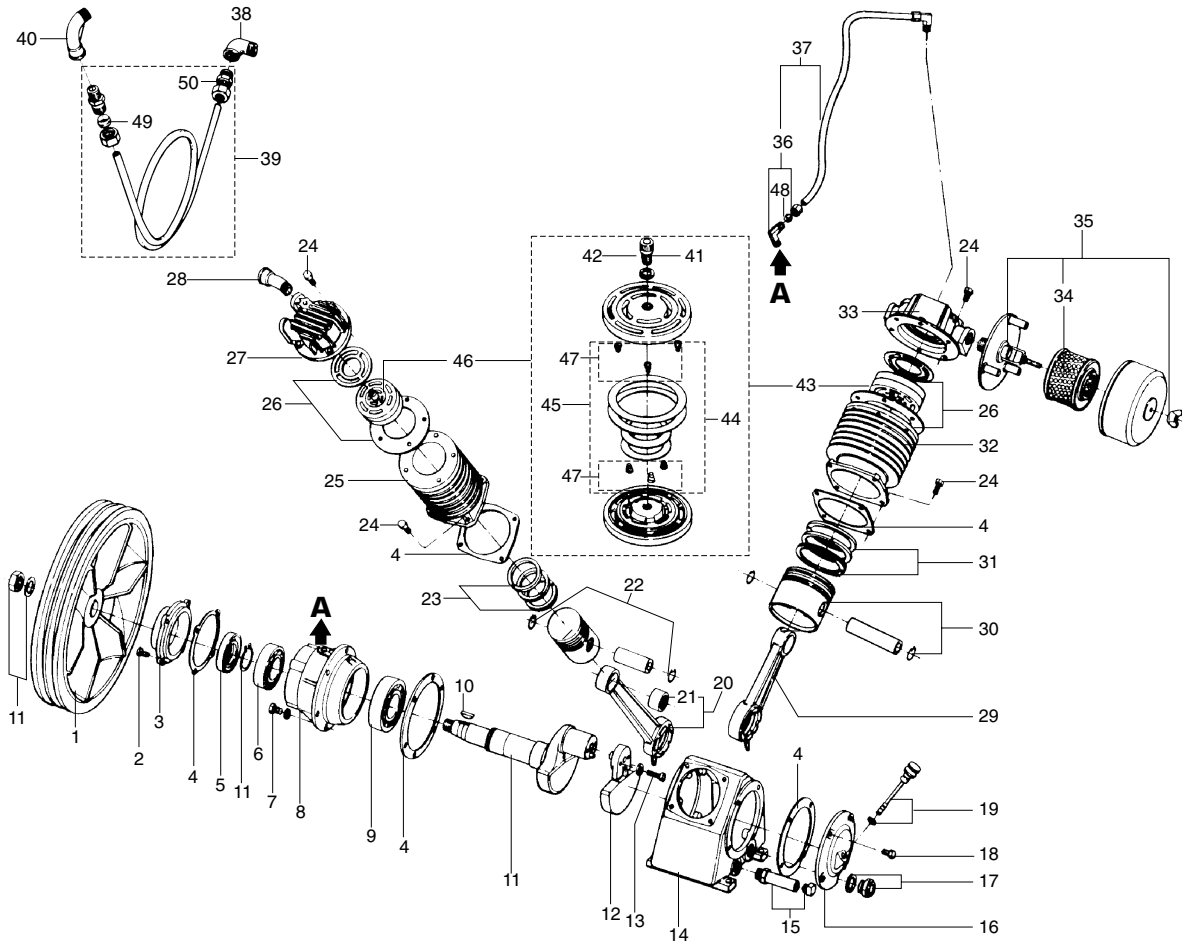


TECHNICAL DATA

MODEL	DISPLACEMENT cfm	MAX. PRESSURE psig	RPM	MOTOR hp	BELT	MOTOR PULLEY				OIL CAP. ℓ	WEIGHT IN lbs	DISCHARGE SIZE
						2 POLES		4 POLES				
						mm	inch	mm	inch			
MSV 20 SD	20	175	930	5	2-B	105	4.1	200	7.9	0,7	120	1/2" BSP



BARE PUMPS PARTS

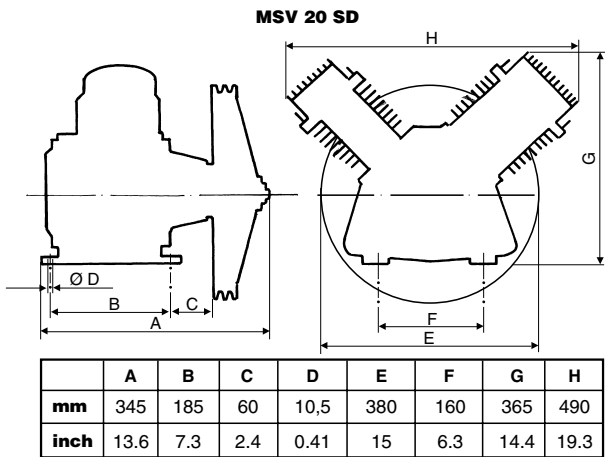
No.	CODE	DENOMINATION	QUANTITY	No.	CODE	DENOMINATION	QUANTITY
1	709.0595-7	Flywheel	01	29	709.0545-0	LP connecting rod	01
2	*	UNC 1/4" x 5/8" LT head screw	04	30	016.0022-2	LP ø4" piston	01
3	709.0161-7	Flange cover	01	31	830.0274-3	LP ring	01
4	830.0275-1	Crankcase gasket	01	32	709.0540-0	LP cylinder	01
5	023.0048-6	Oil seal	01	33	709.0588-4	LP cylinder cover	01
6	019.0005-6	6207 bearing	01	34	007.0118-0	Filter element	01
7	*	UNC 3/8" x 1" LT head screw	06	35	007.0116-0	Air filter	01
8	709.0544-2	Flange	01	36	003.0005-5	NPT 1/8" x 1/4" elbow	02
9	382.0107-7	6308 bearing	01	37	830.0340-5	1/4" crankcase breather tube	01
10	709.0163-3	Key	01	38	003.0113-2	90° MF 1/2" elbow	01
11	830.0375-8	Crankshaft	01	39	830.0296-4	Intercooler	01
12	709.0730-5	Counter weight	01	40	003.0008-0	90° MF 1/2" fitting	01
13	013.0467-4	UNC 3/16" x 7/8" LT Allen head screw	02	41	013.0287-6	LP concentric valve screw	01
14	709.0550-7	Crankcase	01	42	013.0040-7	HP concentric valve screw	01
15	830.0205-0	Oil drain tube	01	43	809.0212-3	LP concentric valve	01
16	709.0549-3	Crankcase cover	01	44	830.0175-5	LP concentric valve kit	01
17	830.0106-2	1/2" oil level sight	01	45	830.0277-8	HP concentric valve kit	01
18	*	UNC 5/16" x 3/4" LT head screw	04	46	809.0321-9	HP concentric valve	01
19	830.0202-6	Oil level dipstick	01	47	830.0582-3	HP/LP concentric valve spring	02
20	830.0636-0	HP connecting rod with needle bearing	01	48	830.0599-8	1/4" ring	01
21	019.0028-0	Needle bearing	01	49	830.0603-0	5/8" ring	01
22	830.0633-0	HP ø 2.1/4" piston	01	50	003.0050-0	1/2" x 5/8" straight connection	02
23	830.0276-0	HP ring	01	-	709.0524-8	Pulley ø 105 mm	01
24	*	UNC 3/8" x 7/8" LT head screw	19	-	709.0464-0	Pulley ø 200 mm	01
25	709.0541-8	HP cylinder	01				
26	830.0294-8	Upper gasket	01				
27	709.0587-6	HP cylinder cover	01				
28	003.0108-6	45° MF 1/2" fitting	01				

* Part available in the market - not sold by Schulz S.A.

Note: The standard motor pulley is supplied with a standard hole.

HP = high pressure
LP = low pressure

DIMENSIONS



INSTALLATION AND OPERATION INSTRUCTIONS

INSTALLATION AND LOCATION

1. Installation: Install the compressor in a covered, well ventilated area, free of dust, toxic gases, humidity or any other kind of pollution. The compressor should be located no closer than 32" (800mm) from a wall or any other obstacle that could interfere with the air flow through the fan. This distance will also make maintenance easier. Place the compressor on a leveled surface. Rotation of the flywheel must be in the direction of the arrow cast into the flywheel. The maximum ambient temperature recommended while working is 113°F or 45°C. If necessary, install an exhaust fan to guarantee fresh air and to dissipate heat.

Before making the electrical connections, check oil level and top-up lubricating oil. For type of oil, see table at the end of these instructions.

2. Electrical connection: The country's valid electrical standards must be followed regarding Low Voltage Electrical Installation.

OPERATION

1. Initial start procedure: Before turning on the compressor, check the crankcase oil level. It must be between the dipstick's maximum and minimum marks, or in the middle of the OIL LEVEL SIGHT. As to the type of oil to be used and the recommended change intervals, check at "Lubrication" and as to its volume, check the Technical Data Table.

2. Start: Turn on the electrical start key and let your compressor run for about 10 (ten) minutes, what will keep the tank's internal pressure or compressed air around 20 psig. This will optimize a homogeneous lubrication of the parts.

LIMITED WARRANTY

All component parts on your SCHULZ compressor are warranted to be free of defects in workmanship and material for a period of one year. Transportation charges are responsibility of the purchaser. This warranty extends to the original purchaser of the compressor only.

There are no express warranties except as contained in this limited warranty statement and implied warranties, including those of merchantability and fitness for a particular purpose, are limited to the period of warranty.

Our liability is limited solely to replacement of nonconforming parts as set forth herein and does not include any liability for any incidental, consequential, or other damages of any kind. This warranty gives you specific legal rights, and you may also have other rights that vary from state to state.

SCHULZ

Schulz of America, Inc.
 320 A Northpoint Parkway
 Acworth, GA 30102
 Phone # (770) 529-4731 / 32
 Fax # (770) 529-4733
 E-mail: sales@schulzamerica.com

MAINTENANCE

WARNING

Turn off power before servicing and be sure the air tank is unloaded. These instructions are based on normal operating conditions. If the compressor is located in an exceedingly dusty area, increase the frequency of all inspections.

DAILY

- Inspect the compressor visually.
- Check oil level and add some if necessary, before turning the compressor on.
- Drain moisture from the piping system.
- Be sure there is no excessive or unusual vibration or noise.

WEEKLY

- Remove and clean intake air filters; do not wash the filter element.
- Check V-belts for tightness. Belt tension should be adjusted to allow approximately 3/8" to 1/2" (9 to 13 mm) deflection with normal thumb pressure.
- Clean cylinders externally, cylinder head, motor, fan blade, tubing, and tank.
- Safety valve should be tested manually to see if it is working properly.

MONTHLY

- Check entire system for air leakage around fittings, etc by using water and soap lather.
- Check the pressure switch operation.
- Check for oil contamination and change it if necessary.

QUARTERLY

- Change the air filter element every 300 working hours or quarterly. (Whichever occurs first).
- Fasten cap screws and nuts as required.
- Change oil more frequently if compressor is located in a very dirty environment.
- On the 7 1/2, 10 and 15 HP compressor pumps, the concentric valves must be inspected and cleaned between 800 and 1000 service hours.

- WHILE RUNNING IN A PERIOD OF ABOUT 100 WORKING HOURS THE OIL LEVEL SHOULD BE CAREFULLY CHECKED.

ANNUALLY

- Test and calibrate the pressure switch, pressure gauge and safety valve according to their own technical standards. These parts must be removed from the tank and pump to be tested.
- Inspect and clean the suction and discharge valve(s) plate(s) every 1000 (one thousand) working hours (whichever occurs first), located between the cylinder and its cover and, if necessary, replace it (them) according to the operation conditions.

LUBRICATION

- The first oil change should be made after 8 hours of operation.
- The second oil change after 40 hours of operation.
- The third and following exchanges should be made after 200 hours of operation, or 60 (sixty) days, whichever occurs first.

NOTE:

Heavy Duty and multi-viscous oils are not adequate for Schulz air compressor's lubrication. The same applies to oils that tend to emulsify.

We recommend good industrial oil for air compressors, with rust and oxidation inhibitors and high viscosity level (from 90 to 95), SAE or ISO, as indicated in the table below:

RECOMMENDED LUBRICANT OILS FOR SCHULZ AIR PUMPS

AMBIENT TEMPERATURE °F (°C)		
Below 32 °F Below 0 °C	32 °F to 68 °F 0 °C to 20 °C	68 °F to 113 °F 20 °C to 45 °C
SAE 10W or ISO 32	SAE 20W or ISO 68	SAE 30 or ISO 100

DISTRIBUTOR